

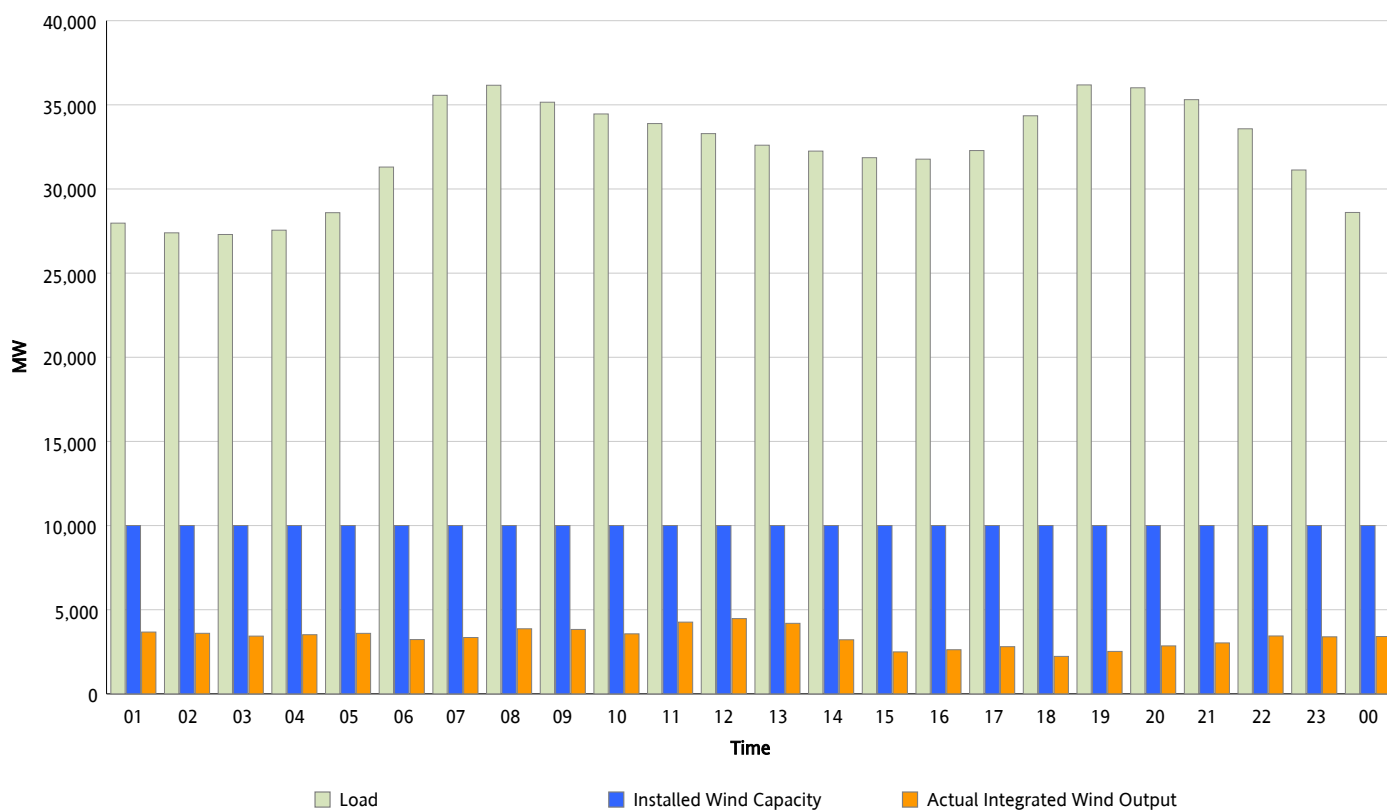


ERCOT Grid Operations

Wind Integration Report : 11/13/2012

Peak Load	36,185 MW
Load Peak Hour (HE)	19
Wind Over Peak	2,523 MW
Wind Record 11/10/12	8,521 MW
Max Wind Value*	4,613 MW
Wind Peak Time	11:51
Wind Integration %	13.99 %

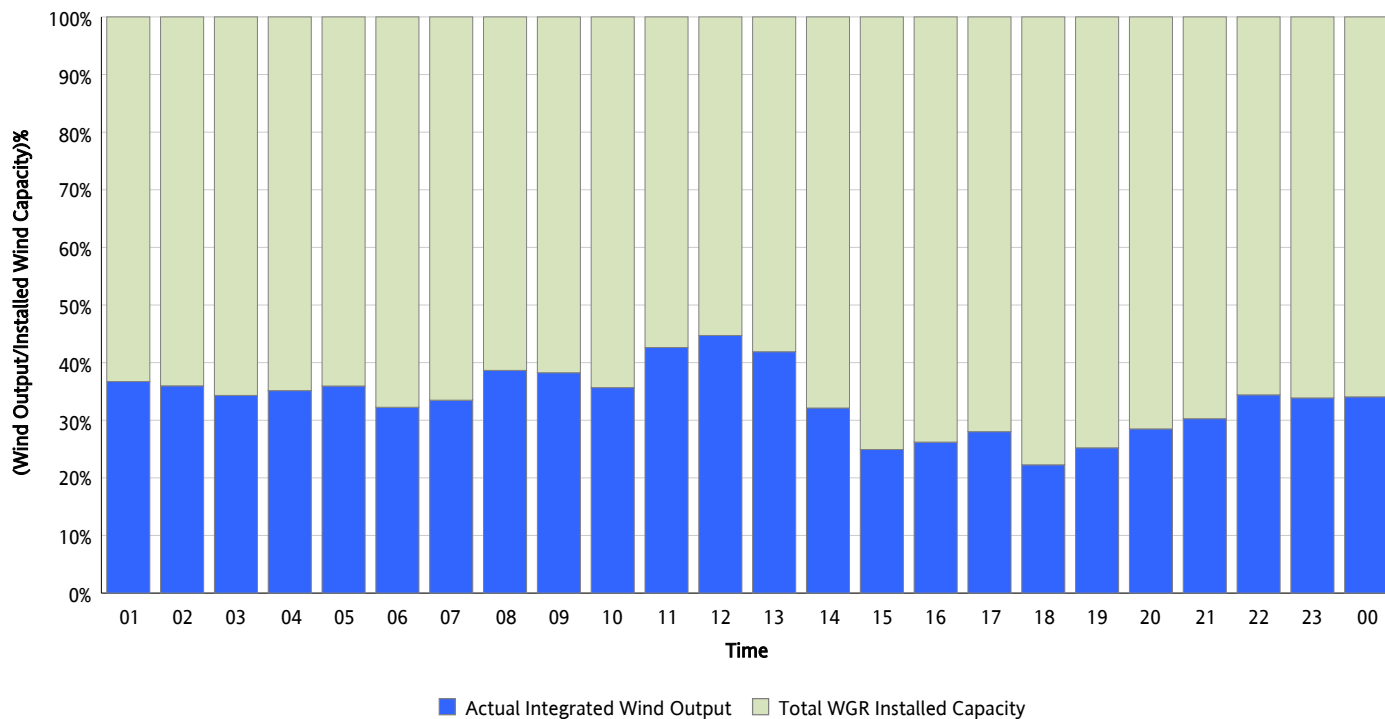
Hourly Average Actual Load vs. Actual Wind Output
11/13/2012



* Wind Record and Wind Max represent instantaneous values and the rest of the values are integrated over the hour

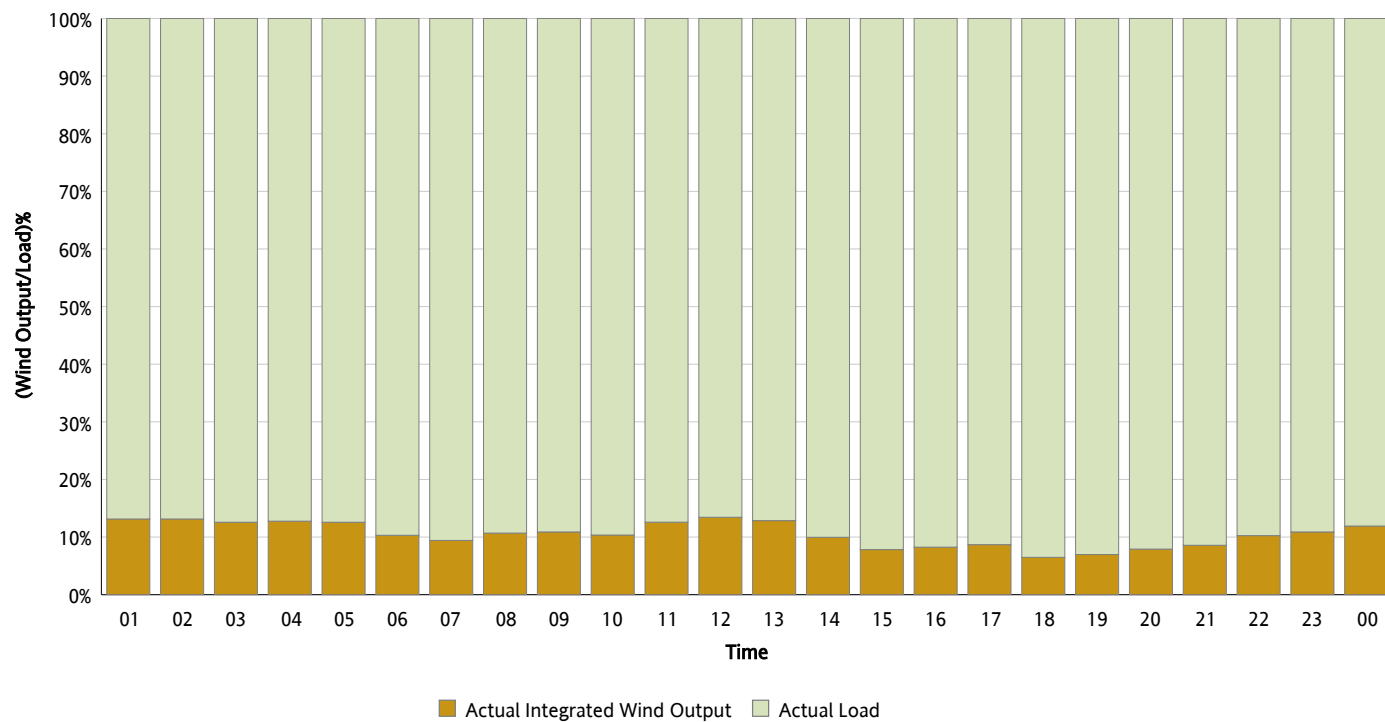
Actual Wind Output as a Percentage of the Total Installed Wind Capacity

11/13/2012



Actual Wind Output as a Percentage of the ERCOT Load

11/13/2012



ERCOT Load vs. Actual Wind Output

11/06/2012 - 11/13/2012

